

A photograph of Plaza Guadalupe, a public square. The central feature is a large, arched entrance with a dark, patterned interior. The plaza is paved and surrounded by trees and buildings. In the foreground, several construction workers are visible, some working on a concrete structure. The sky is clear and blue.

Plaza Guadalupe

Place for healing.

Place of giving back.

Place of community.

Heart of the community.

A reminder of home.

Symbol of the beautiful west side.

A safe place for families.

The plaza brings everyone together.



LATINOS IN ARCHITECTURE
AIA SAN ANTONIO, TX



01
plaza vision //
visión para la
plaza
08.21.2018



02
neighborhood
conversation //
reunión de
vecinos
09.25.2018



03
community
plática // plática
comunitaria
10.29.2018



04
listening session //
sesión de escuchar
12.04.2018



listening
session //
sesión de
escuchar
04.19.2017

An aerial photograph of a residential neighborhood. In the center, there is a large, circular plaza area with a blue roof structure. The surrounding area consists of various residential buildings, some with flat roofs and others with gabled roofs. There are also some trees and a street visible. The overall scene is a typical urban or suburban residential area.

What we heard

The plaza should be a hub for solutions.

A catalyst for change.

Plaza instills pride.

The plaza is a reminder of home.

The plaza is a failing of the community.

I see the plaza as a way to preserve my culture and watch other cultures grow.

The fence should surround the entire Plaza.

A fence is not the answer.

Fence around playground.

Safety first.

Drug addiction is a disease that requires treatment.

A fence does not offer a solution to individuals, or to communities.

An aerial photograph of a city street grid. In the center, there is a large, circular building with a blue roof and a central courtyard. The surrounding area consists of various residential and commercial buildings, streets, and parking lots. The image is slightly dimmed to make the overlaid text stand out.

What we heard

How do we know we are being heard?

Restrooms need to be renovated.

Lower impact activity surface.

Develop fitness programs.

More educational programs.

Emphasize partnerships with other organizations.

Sinks and water fountains.

Changing tables in the bathrooms.

Needs ADA accessibility.

Connect to UTSA downtown campus.

Public Library presence.

Public art.

I am sure my organization would help maintain it.

An aerial photograph of a city block, showing a central plaza area with a circular structure and surrounding residential or commercial buildings. The image is dark and serves as a background for the text.

What we heard

Focus on the real social problems.

More lighting/better lighting.

More free events.

Put shading back.

Waive fees for non-profits to present events.

It needs to be protected.

More police presence.

The plaza is underutilized.

Change management of the plaza.

More music performances.

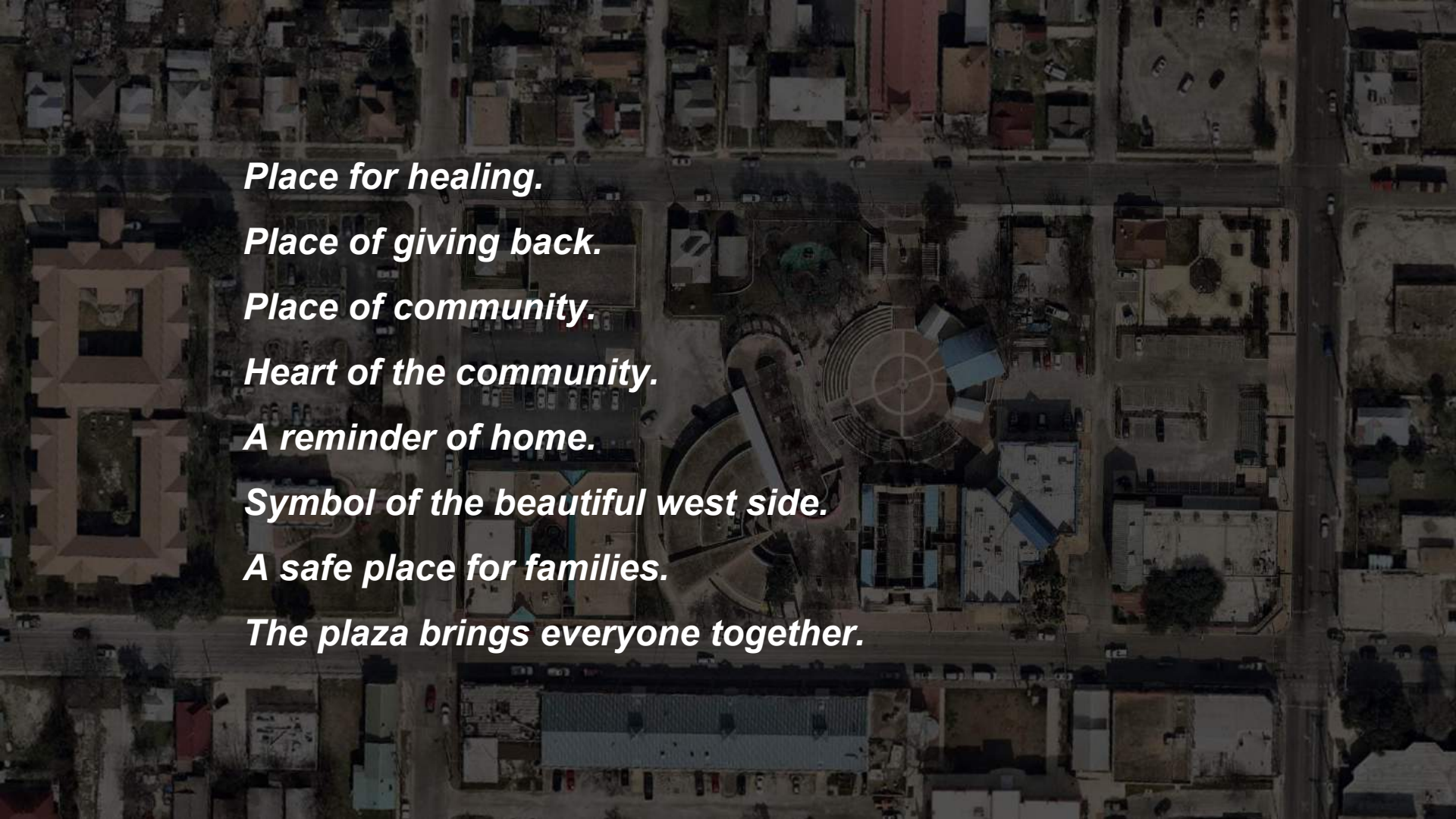
We need to keep our community safe.

More children's programs / Invite schools.

Extension of hours.

Mental health clinic.

A place to celebrate history.

An aerial photograph of a residential neighborhood. The image is dark and has a grainy texture. In the center, there is a large, circular plaza with a blue roof and a circular pattern on the ground. The surrounding area is filled with houses and streets. The text is overlaid on the left side of the image.

Place for healing.

Place of giving back.

Place of community.

Heart of the community.

A reminder of home.

Symbol of the beautiful west side.

A safe place for families.

The plaza brings everyone together.

An aerial photograph of a residential neighborhood with a grid of streets and various houses. A large white Venn diagram is overlaid on the center of the image. The left circle is labeled 'SAFETY', the right circle is labeled 'ACCESS', and the overlapping center area is labeled 'VIBRANT PLAZA'.

SAFETY

**VIBRANT
PLAZA**

ACCESS

An aerial photograph of a city block, showing various buildings, streets, and parking lots. Overlaid on the image is a Venn diagram consisting of three overlapping white circles. The top-left circle is labeled 'MANAGERS', the top-right circle is labeled 'OWNERS', and the bottom circle is labeled 'USERS'. The central area where all three circles overlap is labeled 'VIBRANT PLAZA'.

MANAGERS

OWNERS

**VIBRANT
PLAZA**

USERS

An aerial photograph of a city neighborhood, likely San Antonio, showing residential buildings, streets, and a large circular plaza. Overlaid on the image is a Venn diagram consisting of three overlapping white circles. The text labels are placed within these circles: 'AGA' in the top-left circle, 'city of san antonio' in the top-right circle, and 'communities/ individuals' in the bottom circle. The central intersection of all three circles is labeled 'VIBRANT PLAZA'.

AGA

***city of san
antonio***

**VIBRANT
PLAZA**

***communities/
individuals***

An aerial photograph of a city block, showing residential buildings, streets, and a central plaza area. Overlaid on the image is a Venn diagram consisting of three overlapping white circles. The top-left circle is labeled 'OPERATIONAL', the top-right circle is labeled 'PROGRAM', and the bottom circle is labeled 'PHYSICAL'. The central intersection of all three circles is labeled 'VIBRANT PLAZA'.

OPERATIONAL

PROGRAM

**VIBRANT
PLAZA**

PHYSICAL

OPERATIONAL

TRANSPARENCY

processes that affect all aspects of the plaza

ACCESSIBILITY / AFFORDABILITY

information related to the use of the plaza is needed

COLLABORATIONS

sustainability and future of the plaza

OPERATIONAL

MANAGERS

- Hold public meetings about the future of the Plaza.
- Prioritize notifying communities about changes to the Plaza.
- Make staff and board more visible/accessible.
- Have daily cleaning.
- Involve communities with cleanings of the Plaza.
- Clearly state fees for rentals.
- Make materials for rentals available/accessible.
- Prioritize programming quality at the Plaza.
- Increase programming at the Plaza.
- Focus on collaborations with other organizations for programming.
- Assign more staffing to support the Plaza programming + maintenance.

OPERATIONAL

OWNERS

Fund health and human services around Plaza.

Prioritize financial support for Plaza programming.

Prioritize financial support for Plaza maintenance.

Prioritize financial support for Plaza improvements.

Organize programming at the Plaza.

Attend Plaza events.

Engage with managing organization regarding Plaza needs.

Assist managing organization regarding Plaza programming funding.

Fund public art in the Plaza.

OPERATIONAL

USERS

Organize Plaza events.

Attend Plaza events.

Be an active caretaker of the Plaza. Respect the Plaza.

Participate in collaborations.

Attend managing organization board meetings.

Talk to managing organization staff and leadership about the Plaza.

Notify the managing organization about Plaza issues.

Ask questions about the Plaza.

Learn about the history of the Plaza.

Advocate for funding for the Plaza.

PROGRAMMING

What programs do you want to see happen in your Plaza?

Culture, Art & Music

Pinatas en el Barrio
Parents en el Barrio
After church events (despedidas)
Hispanic cultural education center
World cultural education center
Showcase for local artists
Information Center for the West Side
Incubator for Artists
Huevos Rancheros gala
Graduation Ceremonies
Una Noche en La Gloria
Barrio Boo
Sacred Heart monthly garage sales
Historic Tours
Live music

Educational

Scholarship fest
Career fest
Substance abuse education

Entertainment

Shopping
Flea Markets
Late night food spot
Water feature
Loteria on the weekends
Block Parties

Health & Nutrition

Pharmaceutical
Health screenings
Meal Programs
Fitness classes
Farmers Market

Human & Social Services

Adult day care center
Work release programs
Volunteer Opportunities
Mental health clinic
Counseling Services
Intergenerational programs
House a business coalition

PROGRAMMING

How can we make those programs happen?

Collaboration with local entities

De Novo Foundation	Veterans Affairs	Alamo Area Resource Center (AARC)
Family Violence Prevention Services - Community Based Counseling	Avance	Alcoholic Anonymous
Life Skills for Living	Big Brothers Big Sisters of South Texas	Children's Chorus of San Antonio
Refugee and Immigrant Center for Education and Legal Services (RAICES)	Boys & Girls Club of San Antonio	Healthy Futures of Texas
American GI Forum	Cafe College	Narcotics Anonymous
SAMMinistries	Communities in Schools	San Antonio Christian Dental Clinic
San Antonio Housing Authority	Chrysalis Ministries	San Antonio Council on Alcohol and Drug Awareness
San Antonio Independent Living Serviced	Catholic charities	San Antonio Food Bank
Seton Home of San Antonio	Crosspoint	University of Texas Health San Antonio School of Dentistry
Street2Feet	Crystal Counseling	San Antonio Museum of Art
	Daisy Cares Pet Program	

PROGRAMMING



PROGRAMMING



PROGRAMMING @plaza guadalupe



PHYSICAL

SAFETY + SECURITY

A fence is only one of the many considerations that can contribute to the safe operation of the Plaza. Should the CoSA conclude that a fence is warranted throughout the plaza or only in key areas or that it be installed as a long or short term solution – the fence should blend into the landscape. Imagine the fence as a landscape element rather than a simple barrier. Buffering the fence perimeter with a strip of landscaping and allowing plants to grow on the fence are key to making this strategy successful.

ADA CONSIDERATIONS

LiA recommends that the CoSA and/or the AGA engage an Accessibility Specialist to evaluate the status of ADA compliance in and around the Plaza. All entrances, paths of ingress and egress, restrooms and circulation paths should be evaluated.

RESTROOMS (NEW + RENOVATIONS)

In addition to the evaluation of ADA compliance, the CoSA and/or the AGA should explore the costs associated with installing a restroom near or inside the playground along with vandal resistant fixtures and furnishings in the existing restrooms. Examples would include:

- Stainless steel surfaces, in lieu of tile.
- Stainless steel water closets in lieu of porcelain.
- Water closets without exposed piping and flush valves.

PHYSICAL

SAFETY + SECURITY

A fence is only one of the many considerations that can contribute to the safe operation of the Plaza. Should the CoSA conclude that a fence is warranted throughout the plaza or only in key areas or that it be installed as a long or short term solution – the fence should blend into the landscape. The best strategy for accomplishing this would be to imagine the fence as a landscape element rather than a simple barrier. Buffering the fence perimeter with a strip of landscaping and allowing plants to grow on the fence are key to making this strategy successful.

ADA CONSIDERATIONS

LiA recommends that the CoSA and/or the AGA engage an Accessibility Specialist to evaluate the status of ADA compliance in and around the Plaza. All entrances, paths of ingress and egress, restrooms and circulation paths should be evaluated.

RESTROOMS (NEW + RENOVATIONS)

In addition to the evaluation of ADA compliance, the CoSA and/or the AGA should explore the costs associated with installing a restroom near or inside the playground along with vandal resistant fixtures and furnishings in the existing restrooms. Examples would include:

- Stainless steel surfaces, in lieu of tile.
- Stainless steel water closets in lieu of porcelain.
- Water closets without exposed piping and flush valves.

PHYSICAL

WAYFINDING SIGNAGE

LiA recommends that additional signage be added to the Plaza to assist patrons in navigating through the complex. A signage consultant could recommend options for cost-effective solutions that complement the Plaza's architecture.

SHADE + SEATING

LiA recommends that the CoSA and/or AGA explore the redeployment of the previously installed shading device as the heart of the Plaza is subject to intense solar exposure from the south and west. In lieu of reinstalling the existing solar structure, a new one could be purchased to afford visitors protection from the sun. The comments were fairly consistent that this is a feature that has been missed.

Additionally, there were comments that mentioned the need for seating that is conducive to gathering.

INFORMATION KIOSK

Many comments were made pertaining to addressing the need for information about the Plaza. LiA recommends utilizing one of the structures adjacent to the north entrance to serve as a hub for information. The kiosk should include a calendar of events, contact information, hours of operations along with rules and requirements for the use of the space.

PHYSICAL

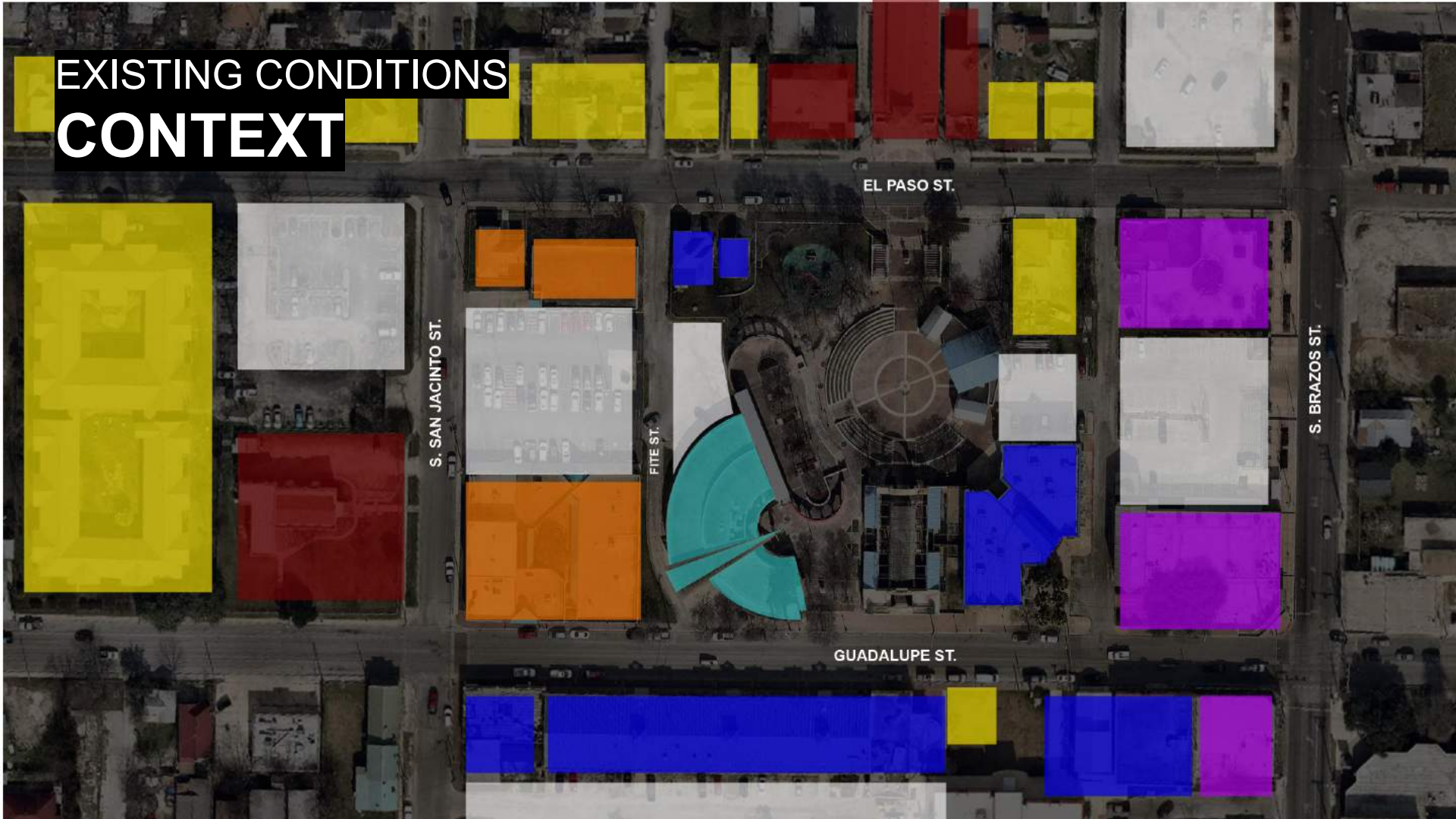
LIGHTING

Another important aspect of safety and security in the plaza is lighting. LiA recommends that a lighting consultant be engaged to evaluate the lighting from both a security and aesthetic point of view. Proper lighting can be effective in eliminating areas that provide opportunities for illicit activities and it can bring a dramatic ambience to nighttime functions.

DRINKING FOUNTAINS

As with the restroom fixtures and furnishings, LiA recommends that the CoSA and/or AGA invest in vandal resistant drinking fountains. Considering the Plaza's exposure to the sun this was noted as a high priority through community comments.

EXISTING CONDITIONS CONTEXT



EL PASO ST.

S. SAN JACINTO ST.

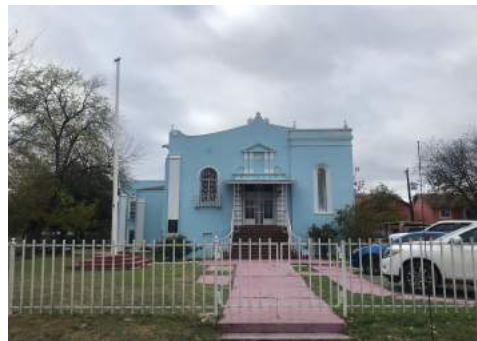
FITE ST.

S. BRAZOS ST.

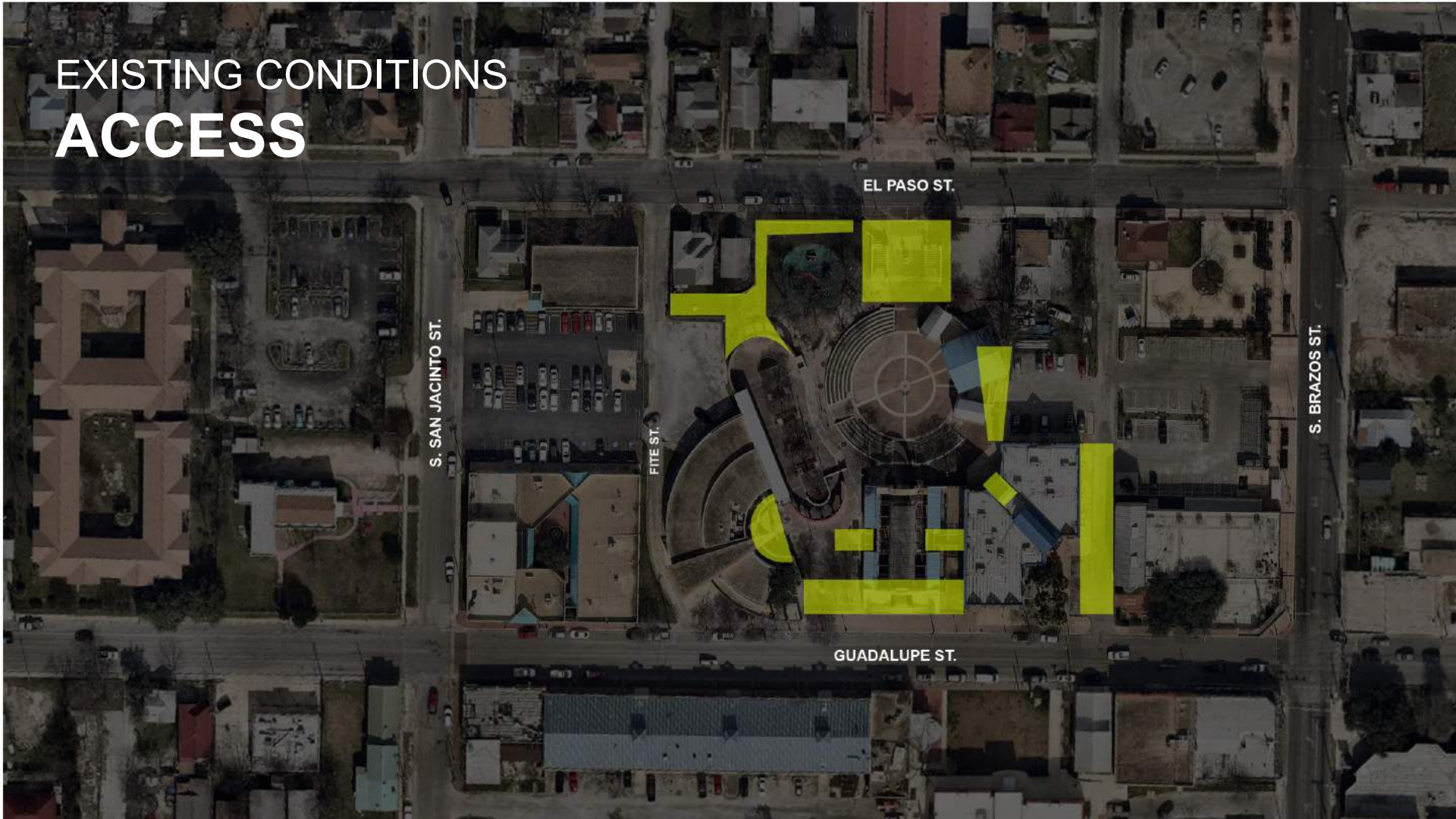
GUADALUPE ST.

EXISTING CONDITIONS

CONTEXT



EXISTING CONDITIONS ACCESS



EL PASO ST.

S. SAN JACINTO ST.

FITE ST.

S. BRAZOS ST.

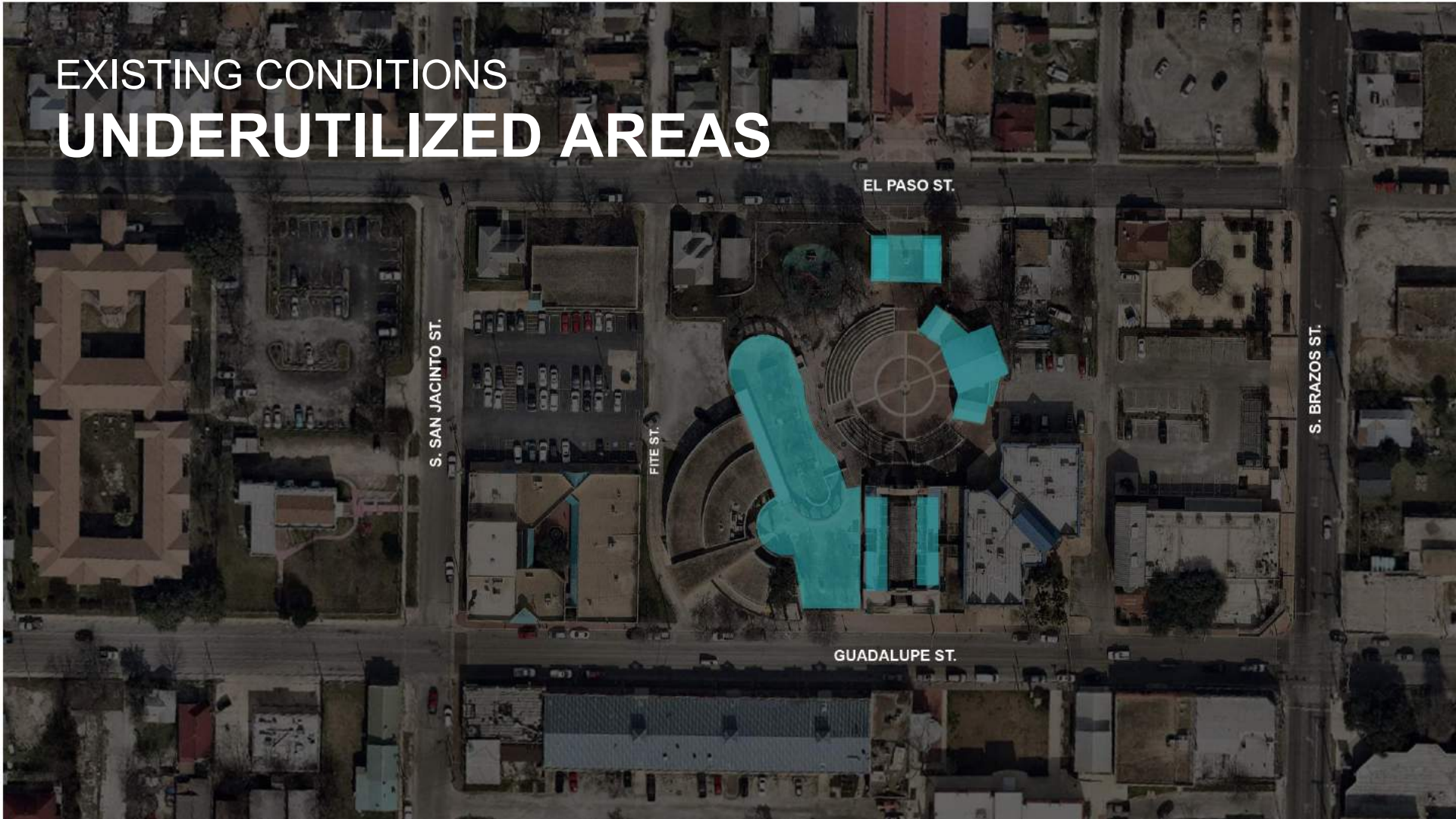
GUADALUPE ST.

EXISTING CONDITIONS

ACCESS



EXISTING CONDITIONS UNDERUTILIZED AREAS



S. SAN JACINTO ST.

FITE ST.

EL PASO ST.

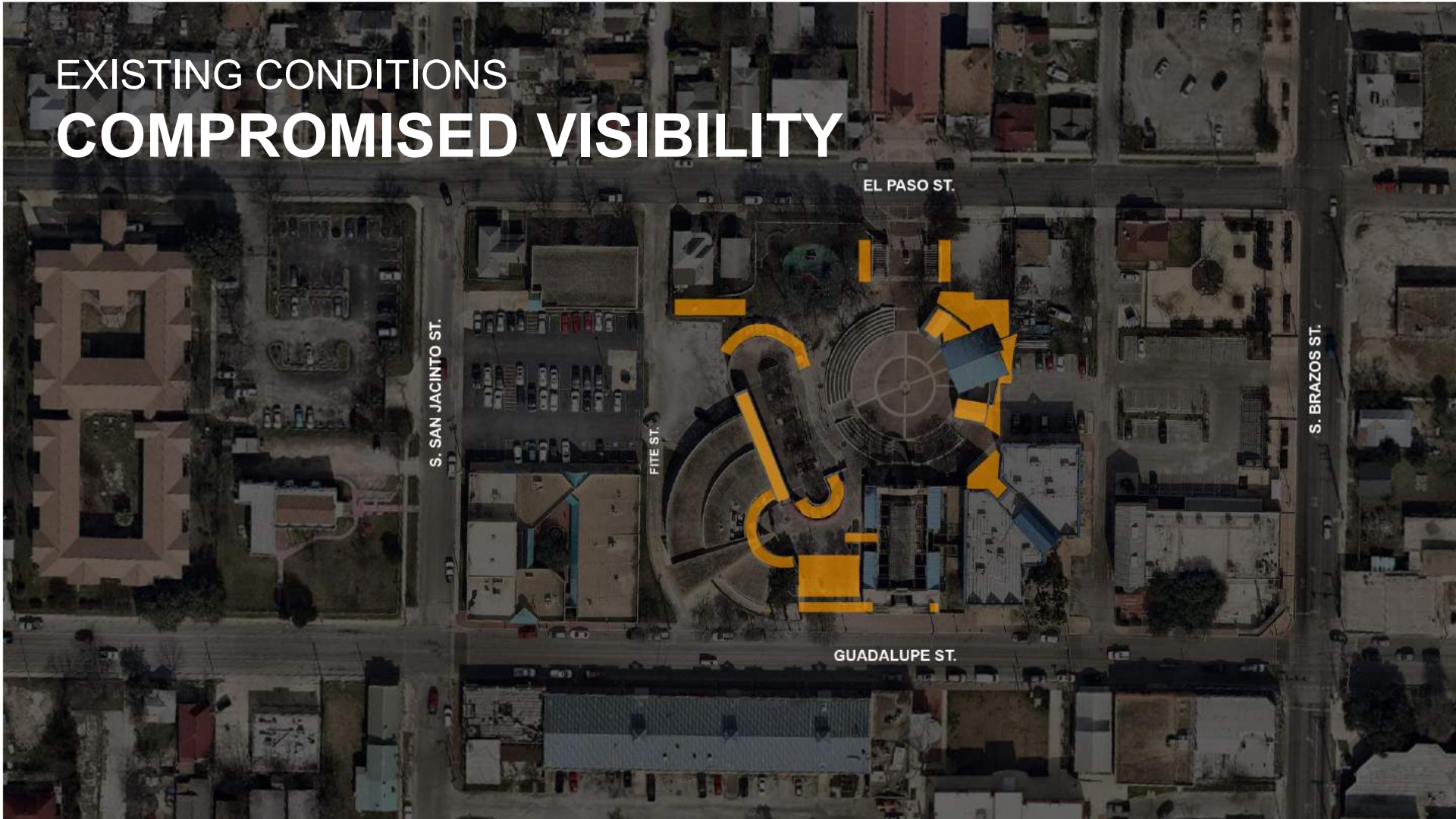
S. BRAZOS ST.

GUADALUPE ST.

EXISTING CONDITIONS UNDERUTILIZED AREAS



EXISTING CONDITIONS COMPROMISED VISIBILITY



S. SAN JACINTO ST.

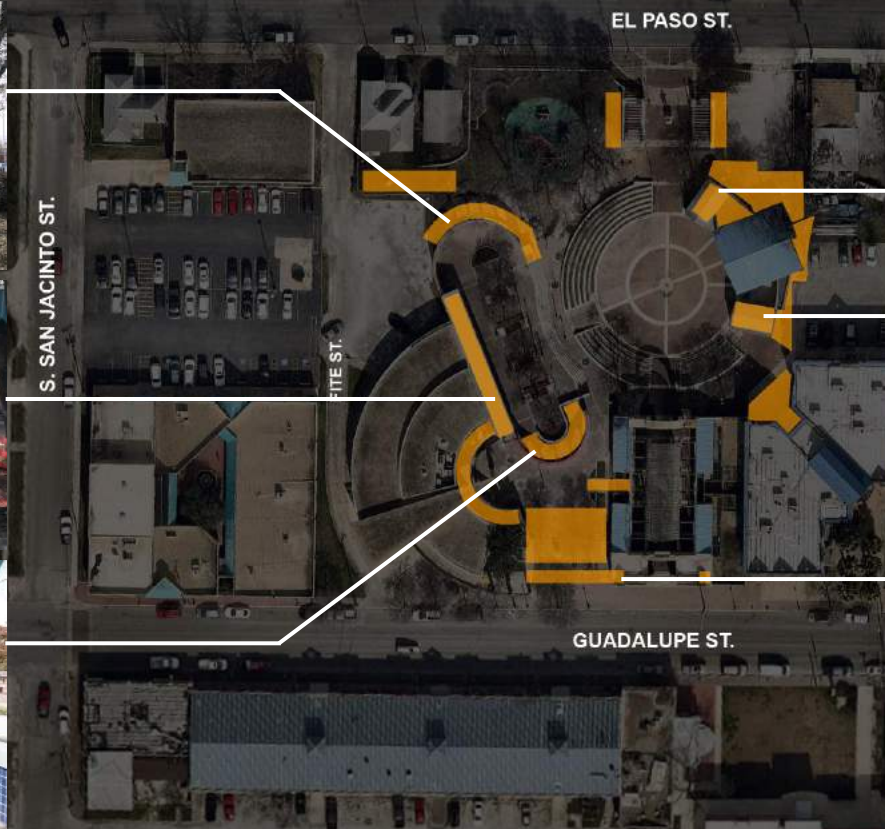
FITE ST.

EL PASO ST.

GUADALUPE ST.

S. BRAZOS ST.

EXISTING CONDITIONS COMPROMISED VISIBILITY



EXISTING CONDITIONS LIMITED VISIBILITY



S. SAN JACINTO ST.

FITE ST.

EL PASO ST.

S. BRAZOS ST.

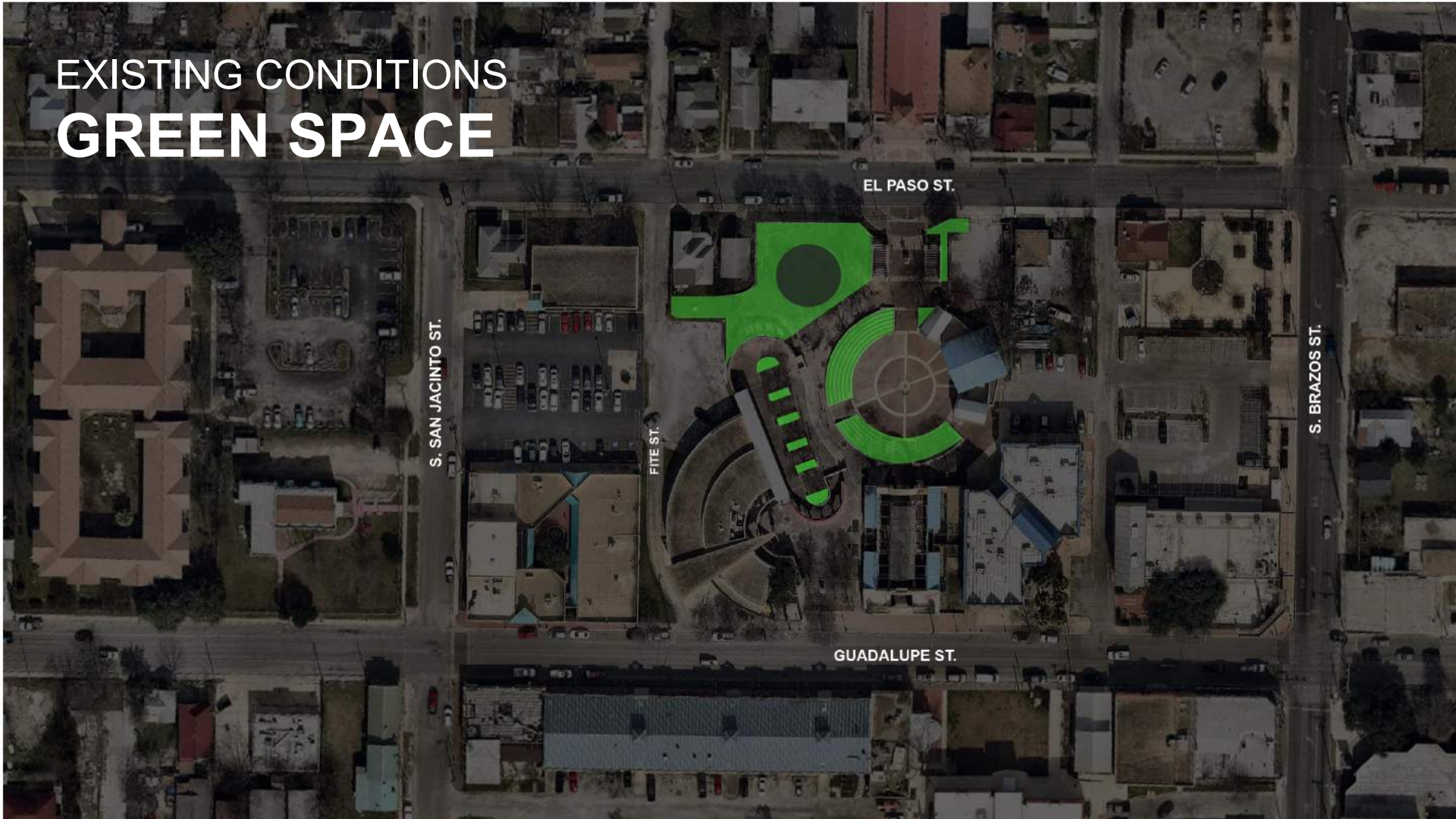
GUADALUPE ST.

EXISTING CONDITIONS

LIMITED VISIBILITY



EXISTING CONDITIONS GREEN SPACE



EL PASO ST.

S. SAN JACINTO ST.

FITE ST.

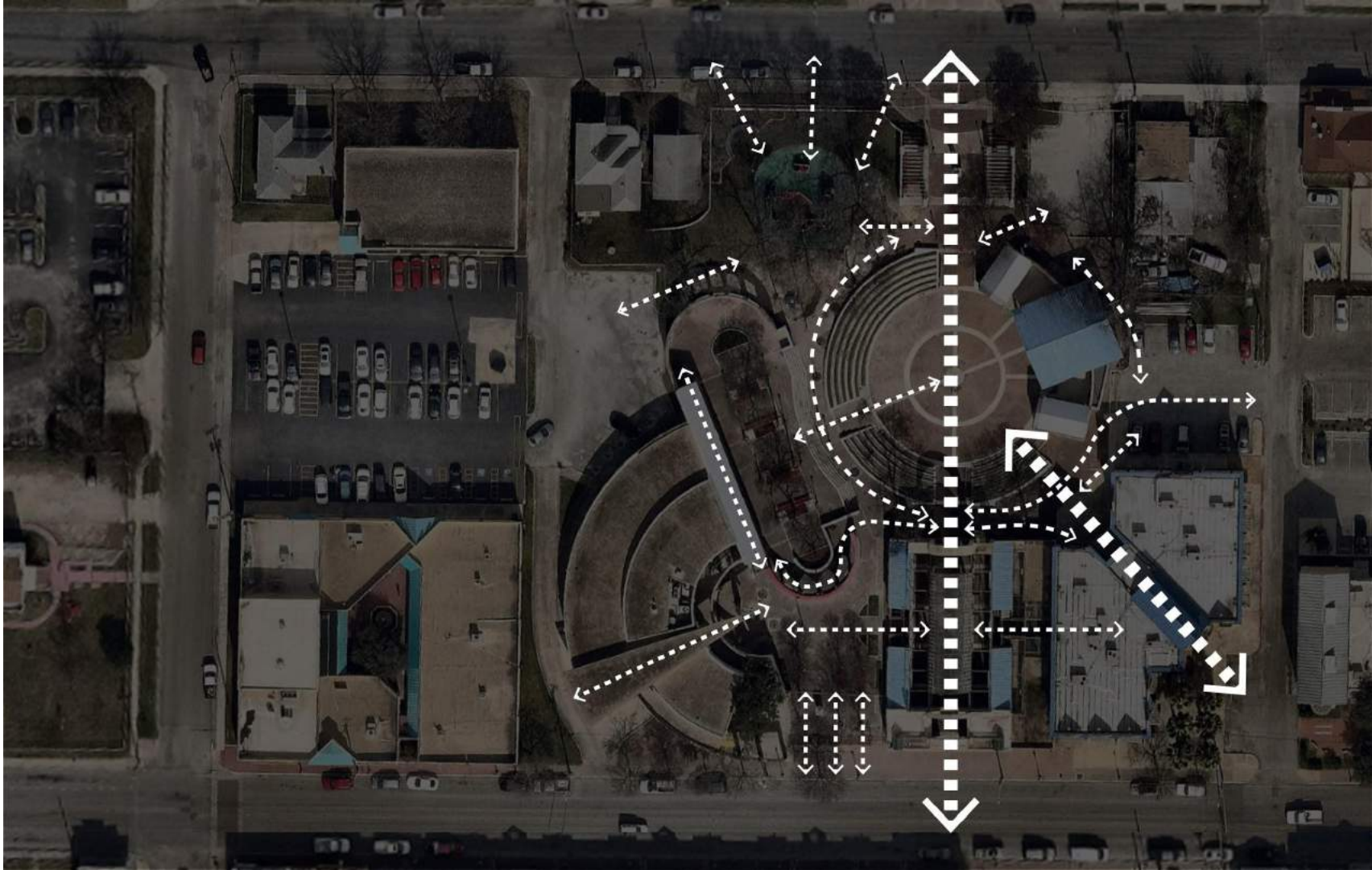
GUADALUPE ST.

S. BRAZOS ST.

EXISTING CONDITIONS

GREEN SPACE





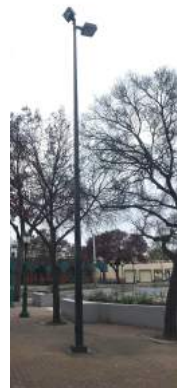
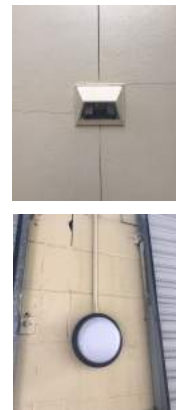
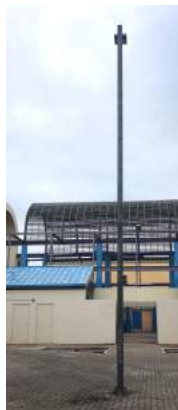
EXISTING CONDITIONS

SEATING



EXISTING CONDITIONS

LIGHTING

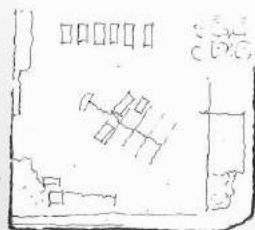
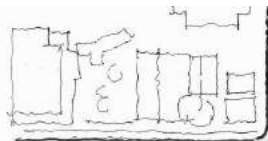


EXISTING CONDITIONS

SIGNAGE

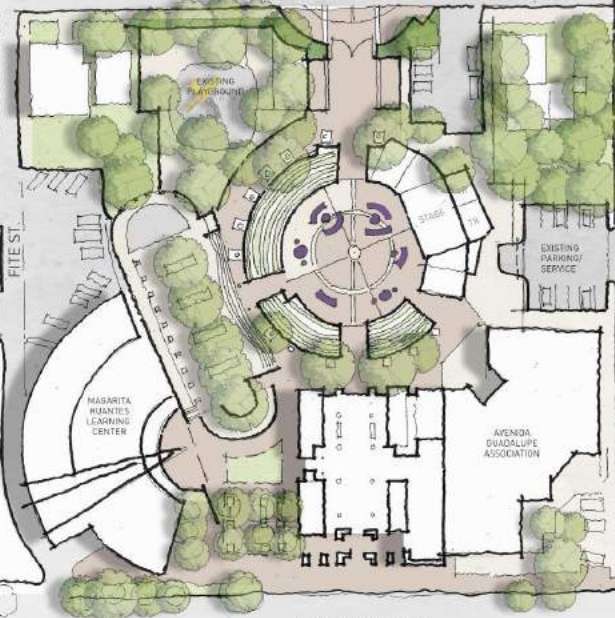
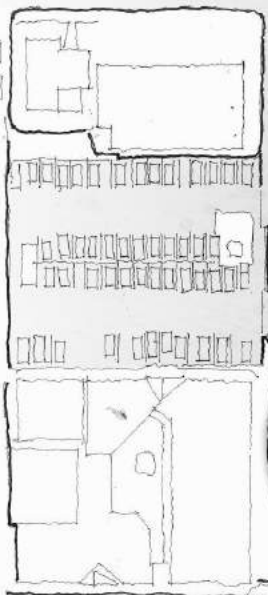


CONCEPT PLANS



EL PASO

SOUTH SAN JACINTO



SOUTH BRAZOS

GUADALUPE ST.

GUADALUPE THEATER

AVENIDA GUADALUPE ASSOCIATION

EXISTING PARKING SERVICE

STAGE

EXISTING PLAYGROUND

MARGARITA RUANTES LEARNING CENTER

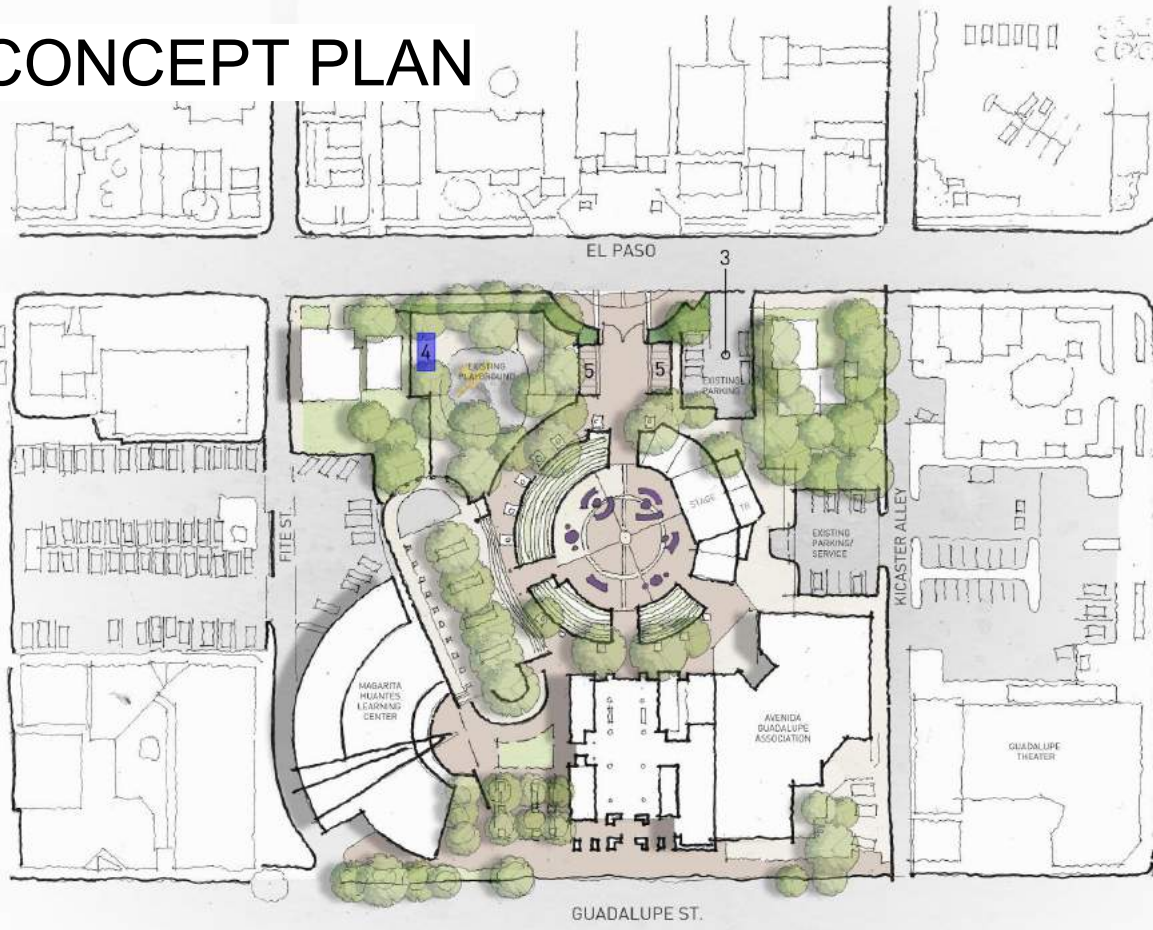
CONCEPT PLAN 1



- 1 Fence + Landscape Improvements
- 2 Gate
- 3 Existing Parking

CONCEPT PLAN

SOUTH SAN JACINTO



EL PASO 3

FITE ST.

KICASTER ALLEY

SOUTH BRAZOS

GUADALUPE ST.

- 1 Fence + Landscape Improvements
- ... 2 Gate
- 3 Existing Parking
- 4 New Toilet
- 5 Community Hub

GUADALUPE THEATER

MAGARITA HUANES LEARNING CENTER

AVENIDA GUADALUPE ASSOCIATION

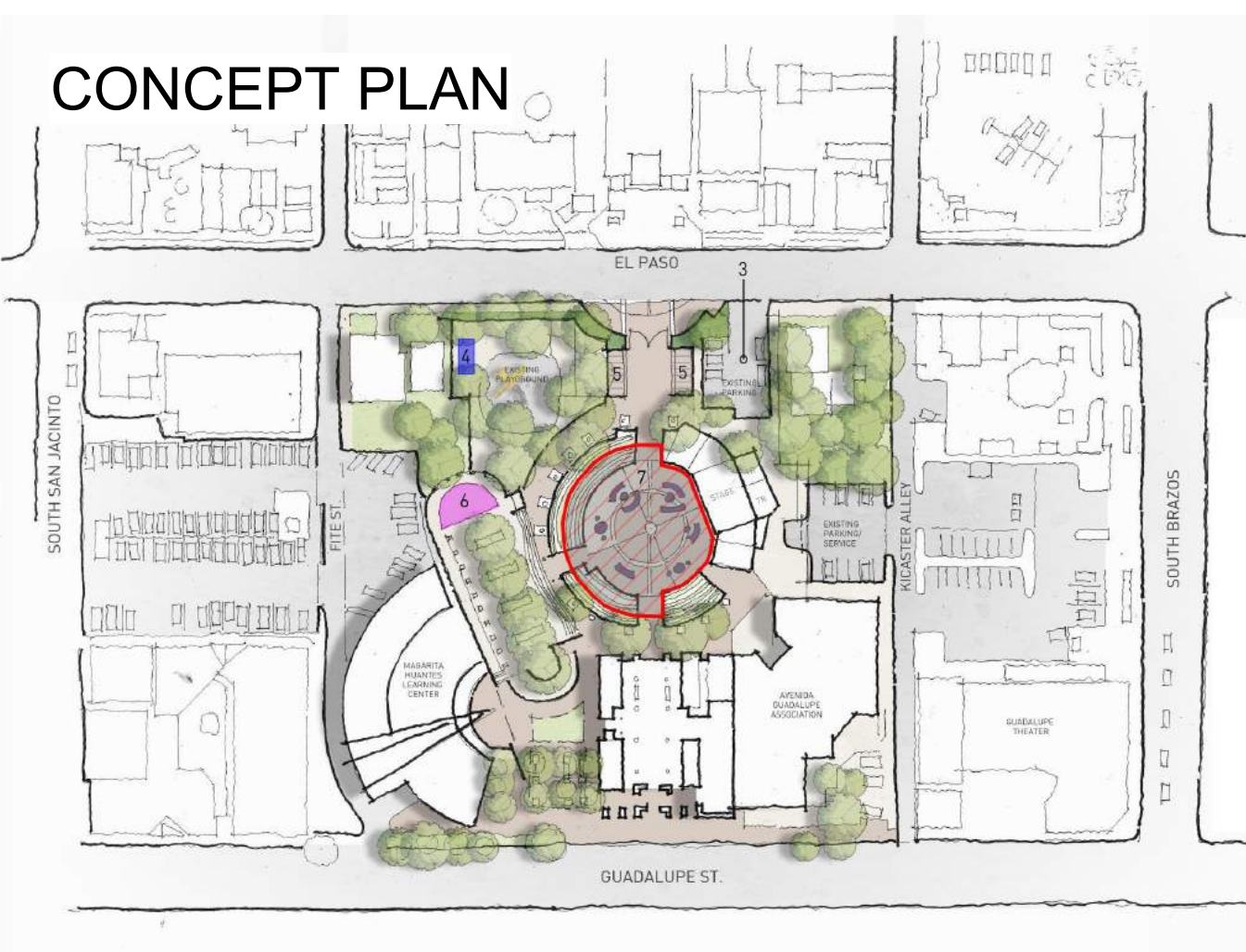
EXISTING PARKING SERVICE

EXISTING PLAYGROUND

EXISTING PARKING

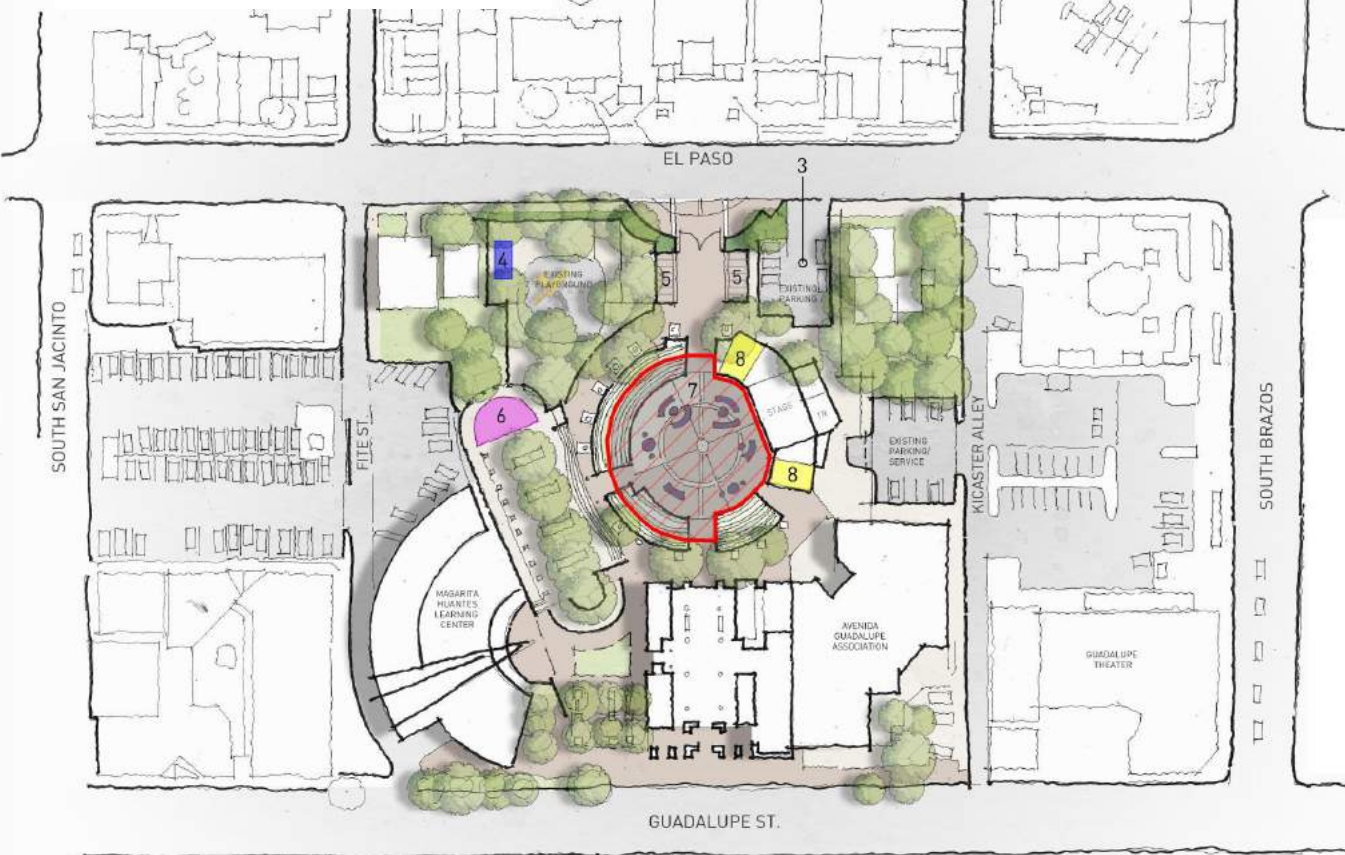
STAGE

CONCEPT PLAN



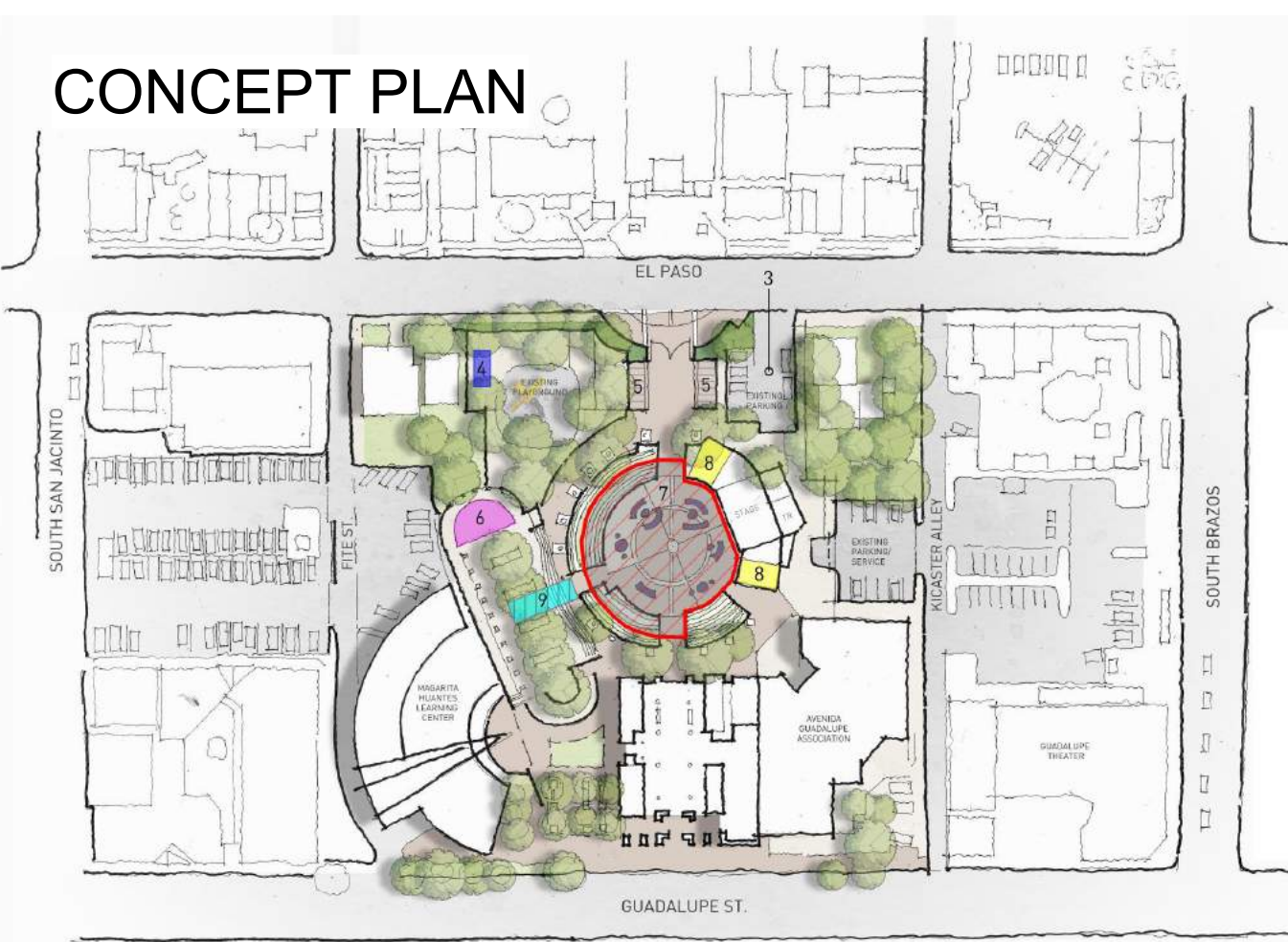
- 1 Fence + Landscape Improvements
- 2 Gate
- 3 Existing Parking
- 4 New Toilet
- 5 Community Hub
- 6 Softscape + Community Activity
- 7 Shade Structure + Plaza Furniture

CONCEPT PLAN



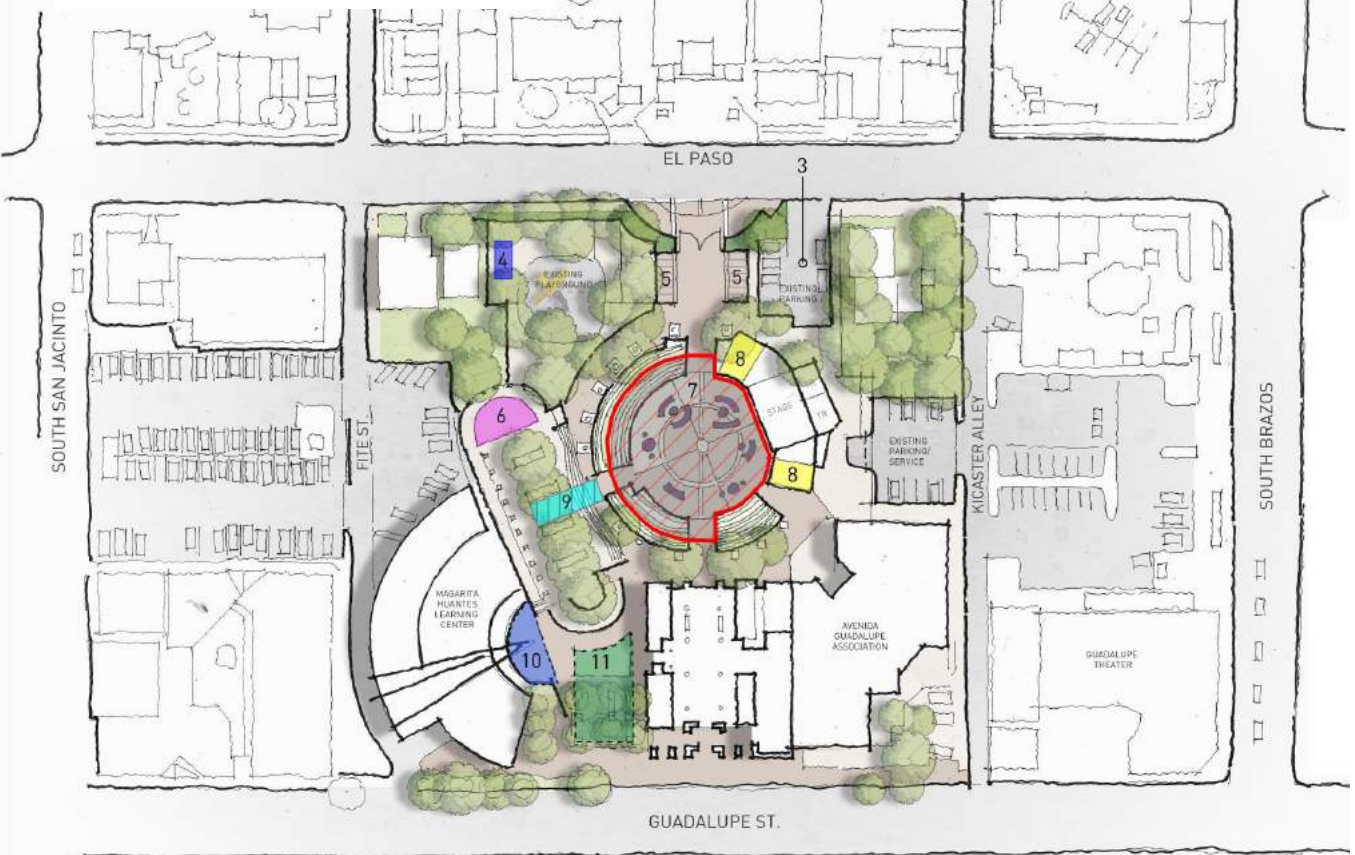
- 1 Fence + Landscape Improvements
- 2 Gate
- 3 Existing Parking
- 4 New Toilet
- 5 Community Hub
- 6 Softscape + Community Activity
- 7 Shade Structure + Plaza Furniture
- 8 Storage + Greenroom

CONCEPT PLAN



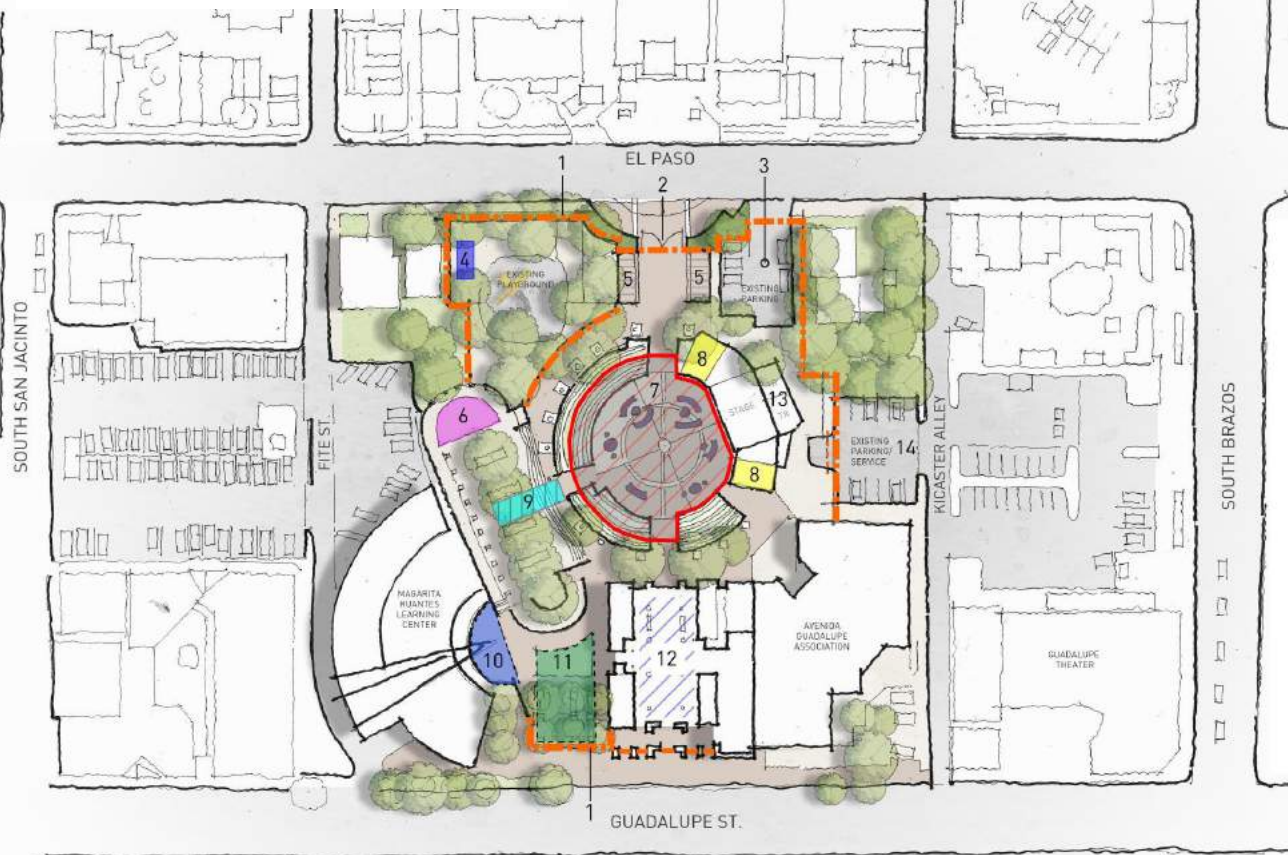
- 1 Fence + Landscape Improvements
- 2 Gate
- 3 Existing Parking
- 4 New Toilet
- 5 Community Hub
- 6 Softscape + Community Activity
- 7 Shade Structure + Plaza Furniture
- 8 Storage + Greenroom
- 9 Future Trellis

CONCEPT PLAN



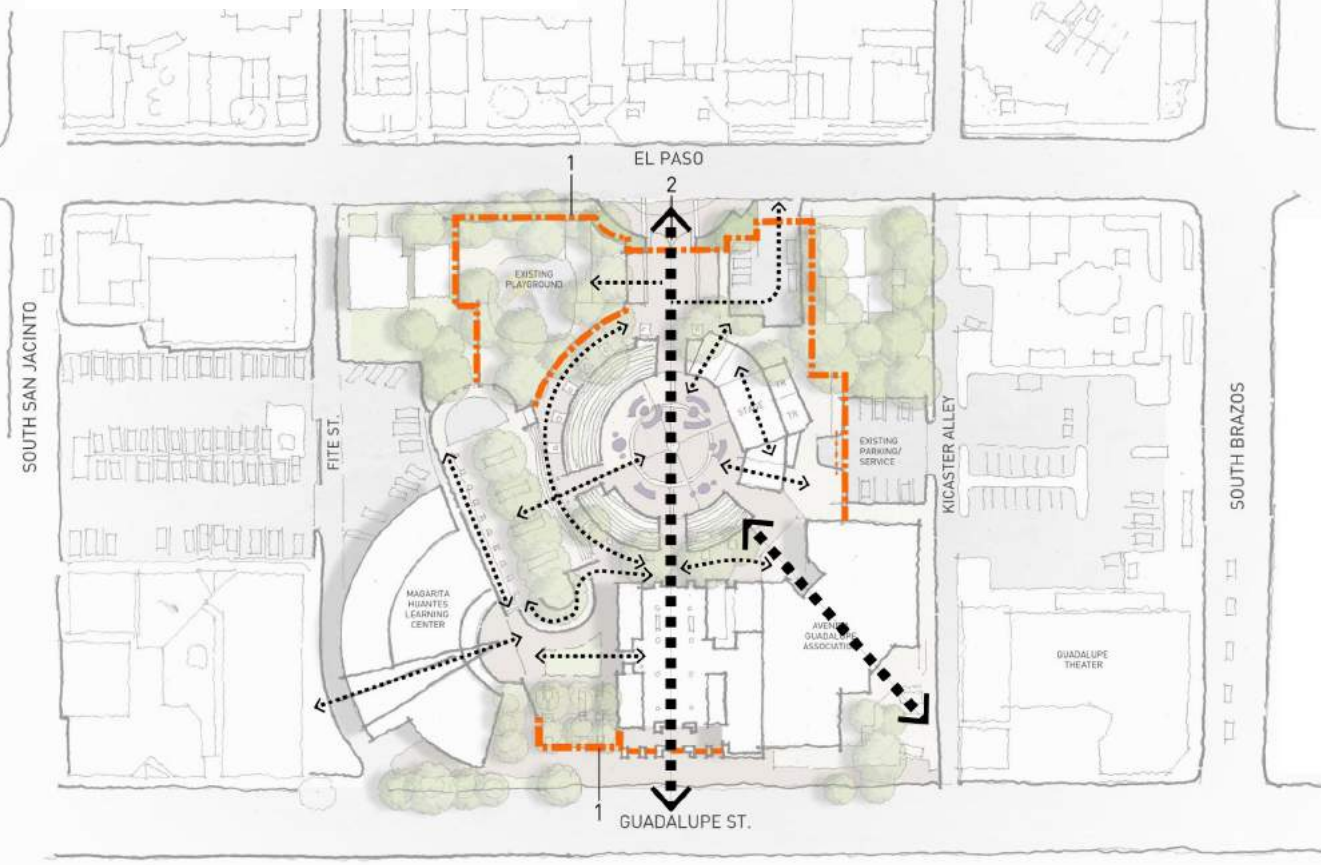
- 1 Fence + Landscape Improvements
- 2 Gate
- 3 Existing Parking
- 4 New Toilet
- 5 Community Hub
- 6 Softscape + Community Activity
- 7 Shade Structure + Plaza Furniture
- 8 Storage + Greenroom
- 9 Future Trellis
- 10 Future Landscape Expansion
- 11 Future Outdoor Space

CONCEPT PLAN 1

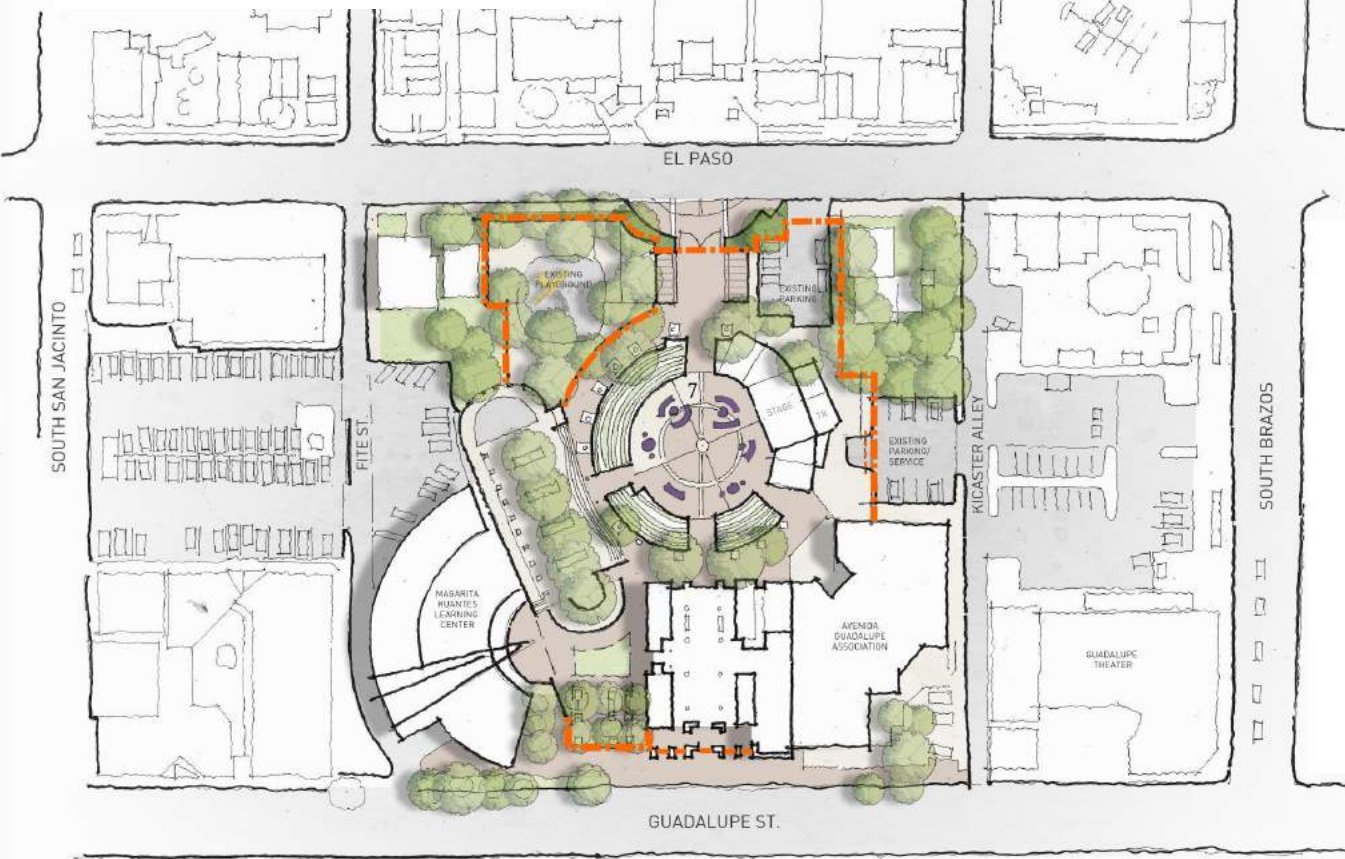


- 1 Fence + Landscape Improvements
- ... 2 Gate
- 3 Existing Parking
- 4 New Toilet
- 5 Community Hub
- 6 Softscape + Community Activity
- 7 Shade Structure + Plaza Furniture
- 8 Storage + Greenroom
- 9 Future Trellis
- 10 Future Landscape Expansion
- 11 Future Outdoor Space
- 12 Great Hall
- 13 Existing Restrooms
- 14 Existing Parking + Service

CONCEPT PLAN 1



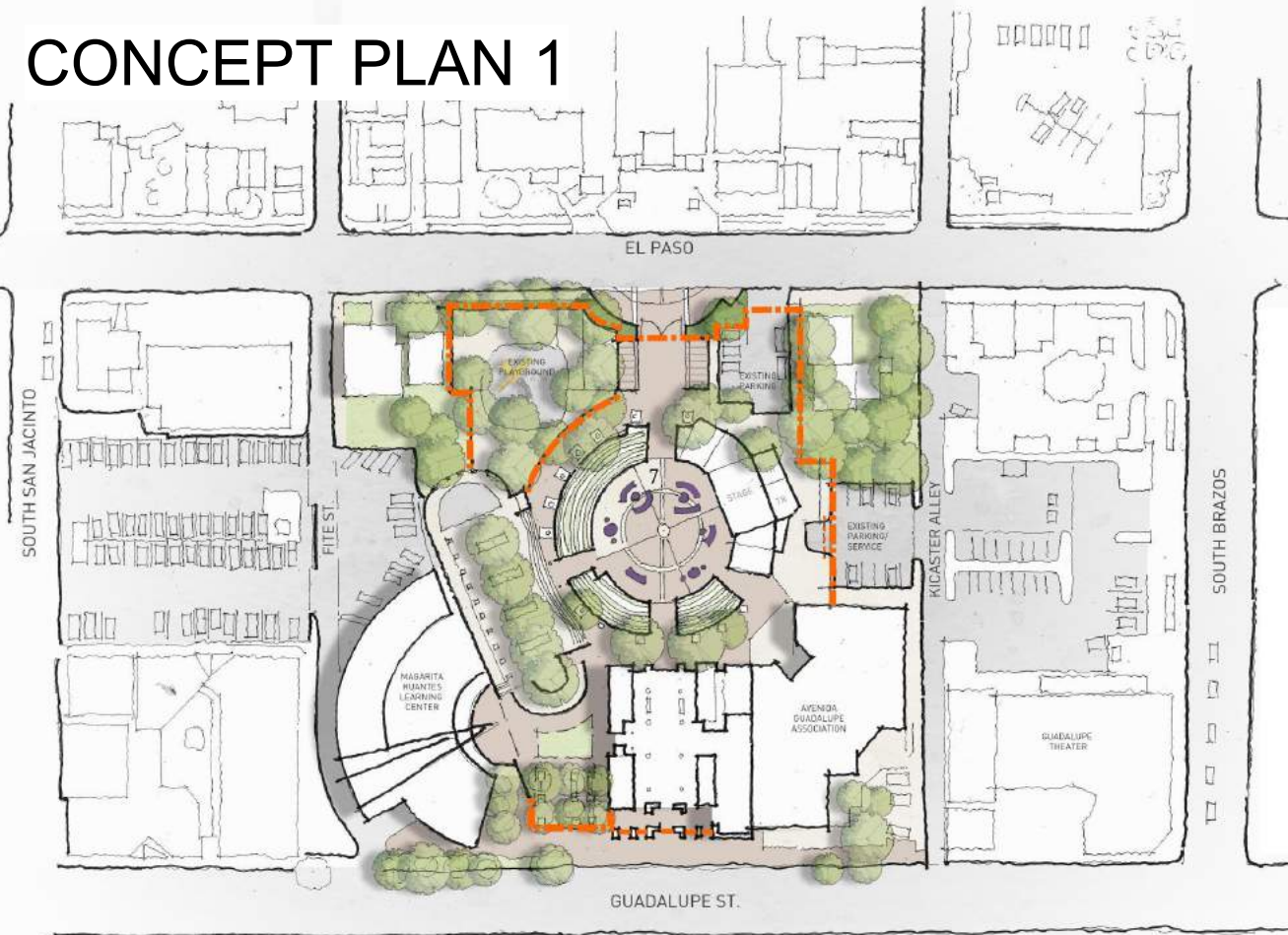
CONCEPT PLAN 1



Pros

- 1 *Preservation of the Plaza*
- 2 *An added sense of security*
- 3 *Increased control of entry and exit*
- 4 *Defined hours of operation*
- 5 *Reduced risk of vandalism*
- 6 *Protection of materials*
- 7 *Protection of equipment*
- 8 *Reduction in daily cleaning of plaza*

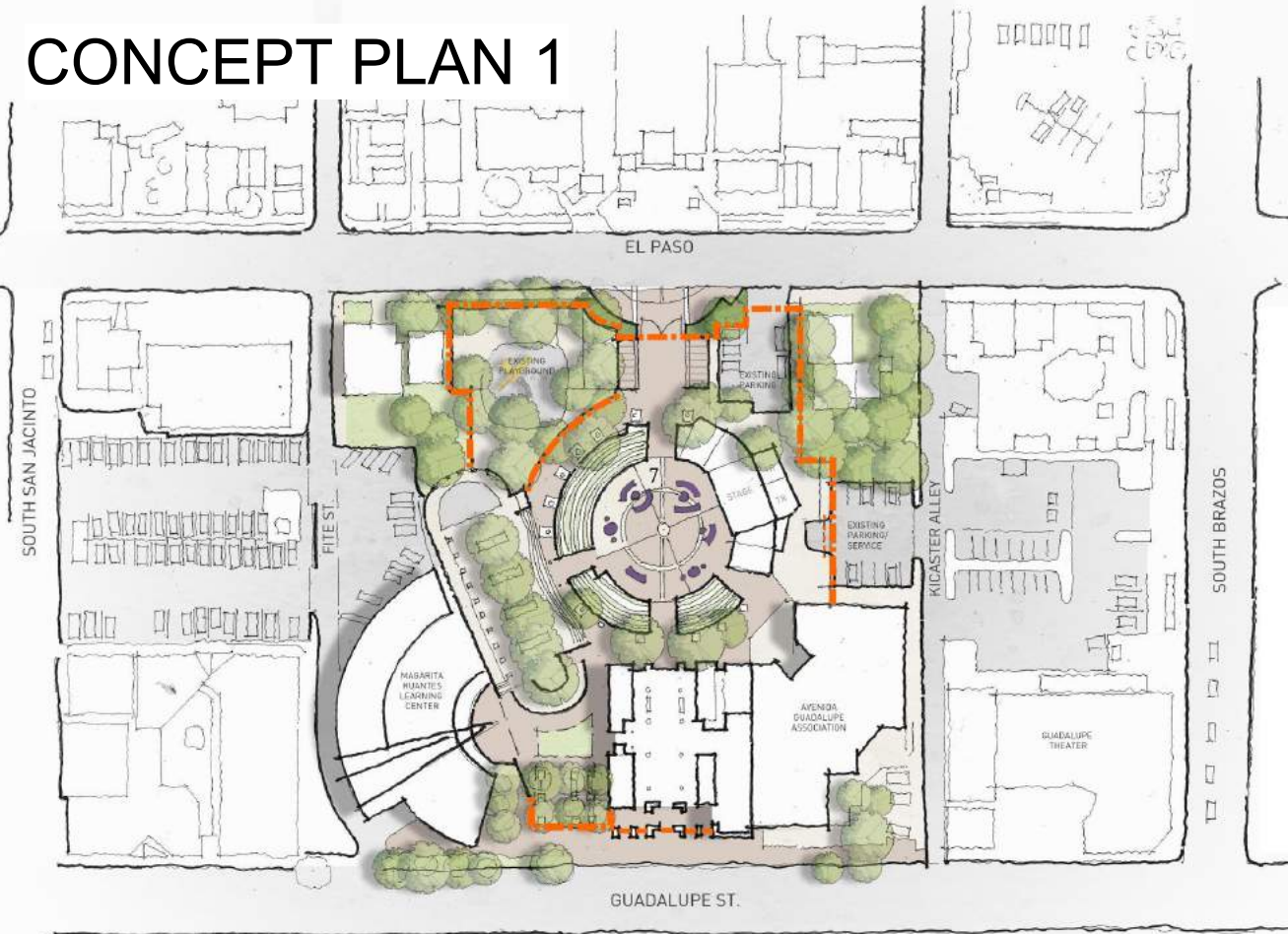
CONCEPT PLAN 1



Cons

- 1 Security is achieved at the loss of accessibility
- 2 Increased control of entry contributes to a Plaza with little activation
- 3 Defined hours of operation limit the potential connection people have with the space
- 4 No connection between El Paso and Guadalupe St.
- 5 A fence does not symbolize or promote inclusion

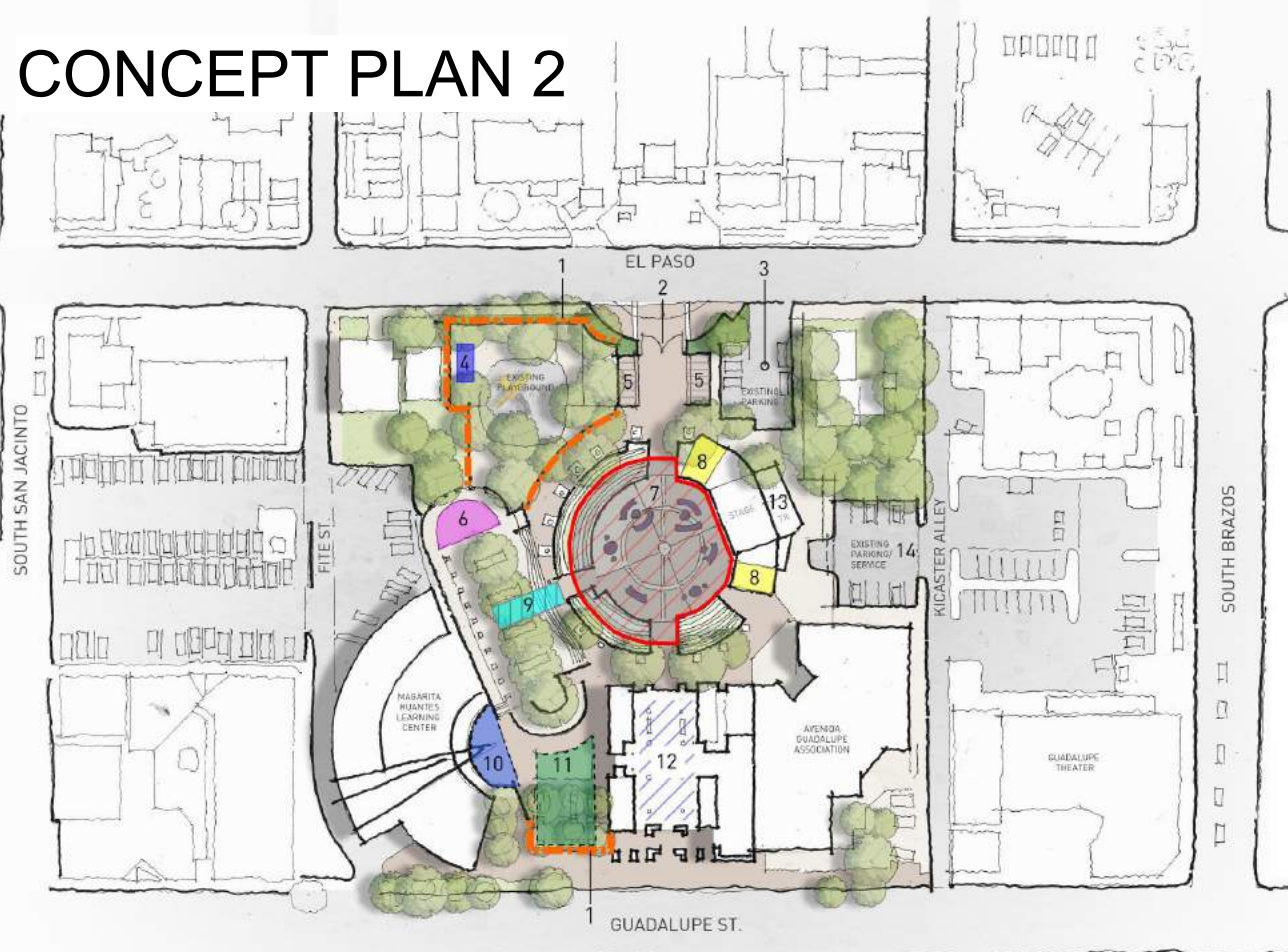
CONCEPT PLAN 1



What is needed to make this proposal viable

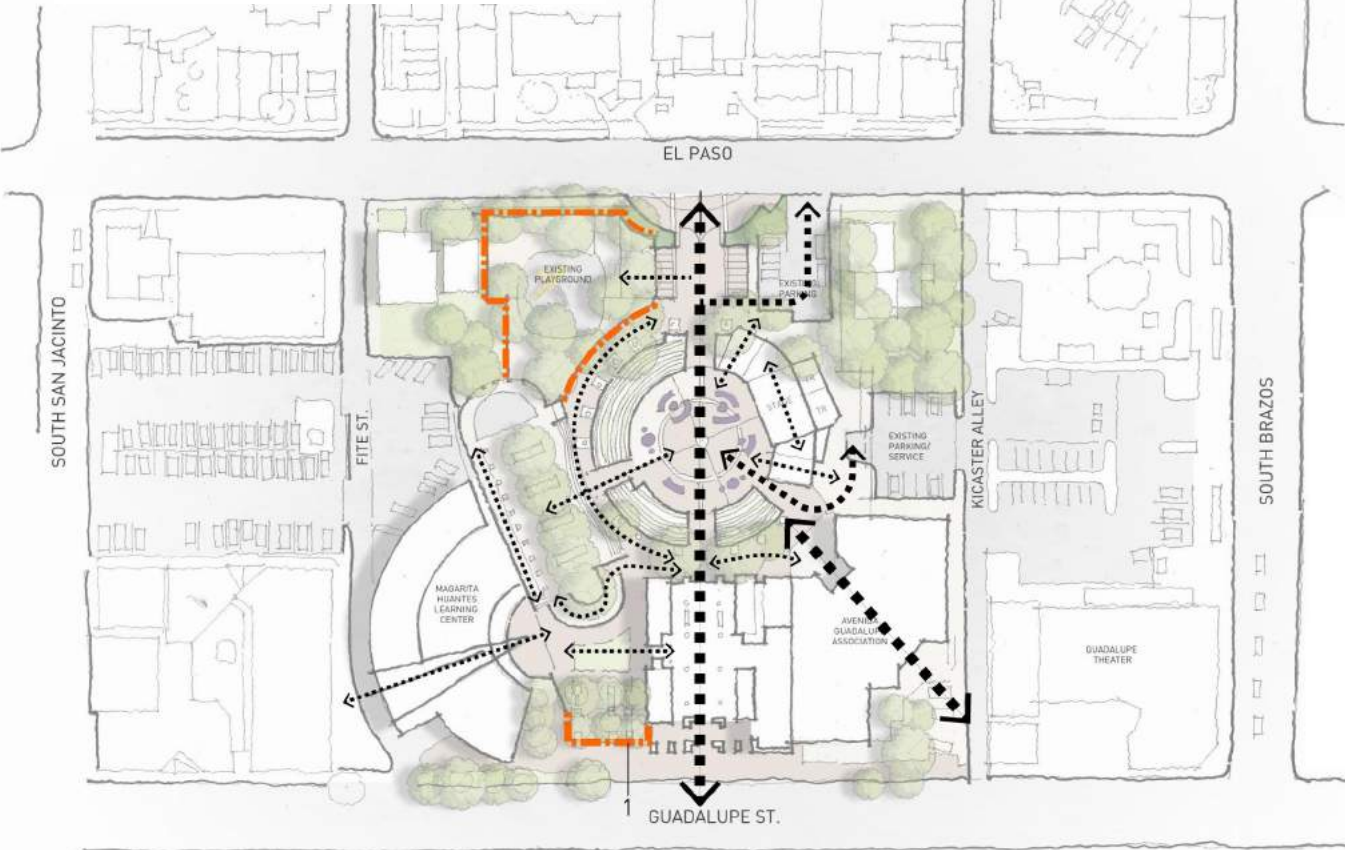
- 1 A fence needs to not be a simple barrier.*
- 2 The “fence” could serve as an art piece.*
- 3 The “fence” should be transparent.*
- 4 Hours of operation need to be clearly defined.*
- 5 Event calendar (digital and physical) needs to be readily accessible.*
- 6 Rental agreements for the Plaza need to be clearly defined (digitally and physically).*

CONCEPT PLAN 2



- 1 Fence + Landscape Improvements
- 2 Gate
- 3 Existing Parking
- 4 New Toilet
- 5 Community Hub
- 6 Softscape + Community Activity
- 7 Shade Structure + Plaza Furniture
- 8 Storage + Greenroom
- 9 Future Trellis
- 10 Future Landscape Expansion
- 11 Future Outdoor Space
- 12 Great Hall
- 13 Existing Restrooms
- 14 Existing Parking + Service

CONCEPT PLAN 2



CONCEPT PLAN 2



Pros

- 1 The Plaza becomes part of the free and open landscape of the neighborhood.
- 2 The Plaza is activated 24 hours a day.
- 3 The Plaza becomes the setting for both free and private functions.
- 4 The Plaza thrives as a community asset, venue, destination.

CONCEPT PLAN 2



Cons

- 1 The 24/7 openness of the Plaza allows for the presence of a criminal element.
- 2 Without structured hours, the Plaza becomes susceptible to crime and vandalism and it loses its standing in the community as an extension of "Home."
- 3 Increase in operational costs related to cleaning and maintenance.
- 4 Potential increase in repairs/replacements.

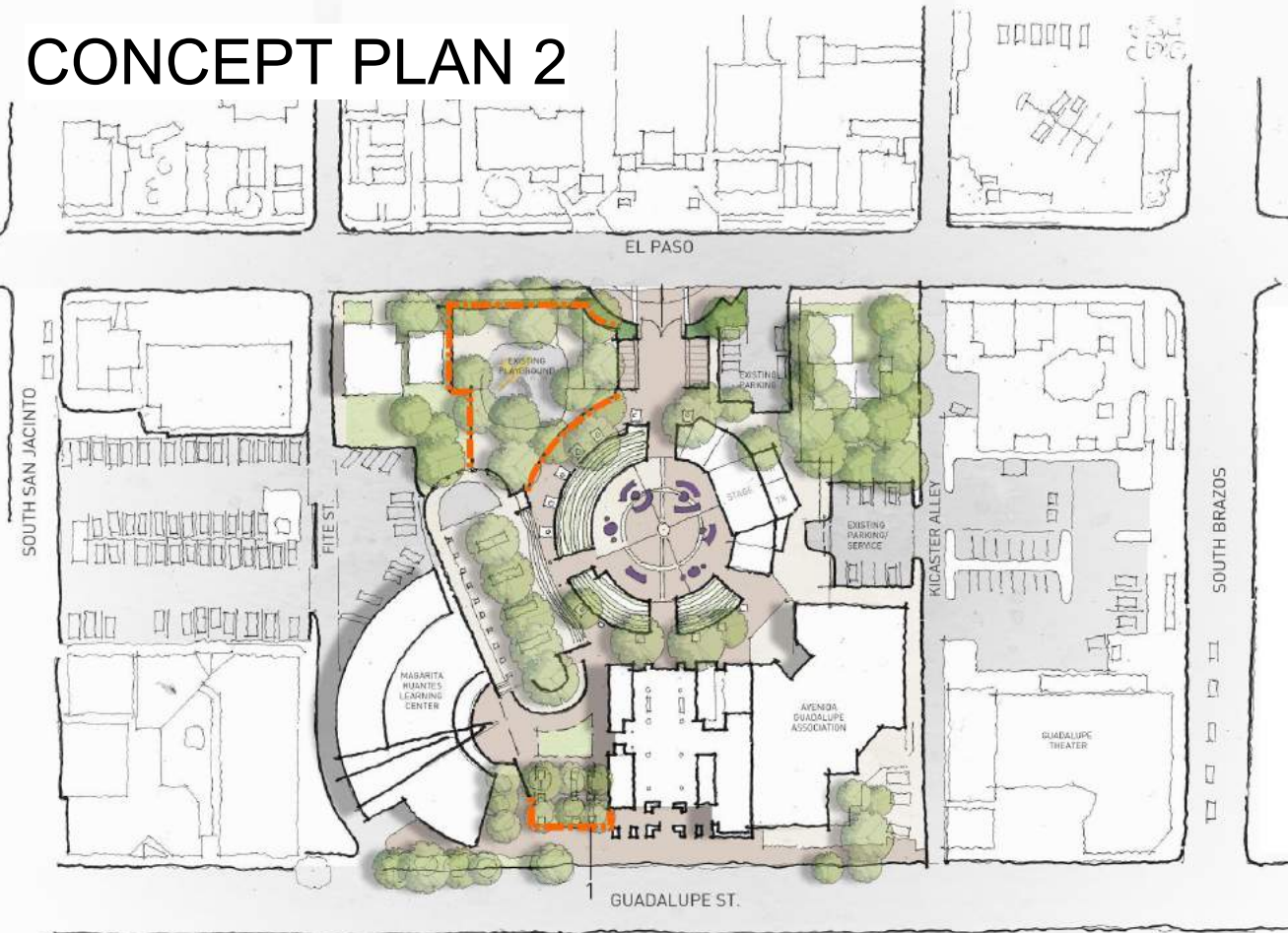
CONCEPT PLAN 2



What is needed to make this proposal viable

- 1 The community needs to be engaged in the day to day operations of the Plaza.
- 2 Various organizations within the community and beyond, need to know that they have a place in the Plaza reserved for them.
- 3 That the Plaza is not a "pay as you go" venue, but an asset that they are afforded by way of offering valuable services to the community.
- 4 The immediate community, neighborhood organizations and the CoSA need to initiate plans to guarantee the safety and security of the Plaza and all who use it.

CONCEPT PLAN 2

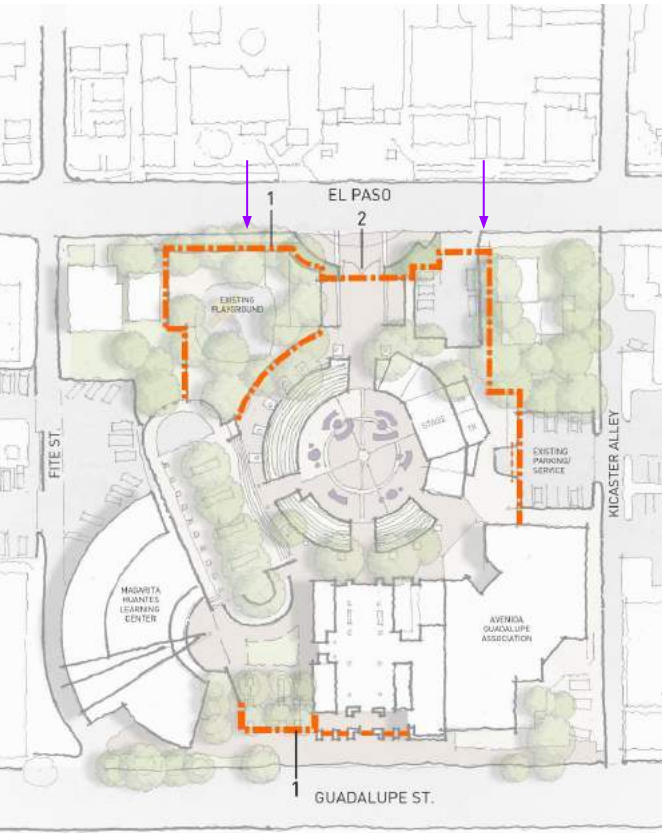


What is needed to make this proposal viable

- 5 Appropriate staffing to assist with maintenance programming and reserving of the Plaza needs to be in place.
- 6 Increased surveillance of the Plaza from 11pm-5am.
- 7 Increased funding for programming and operations.
- 8 Increased health and human services offered around the Plaza.

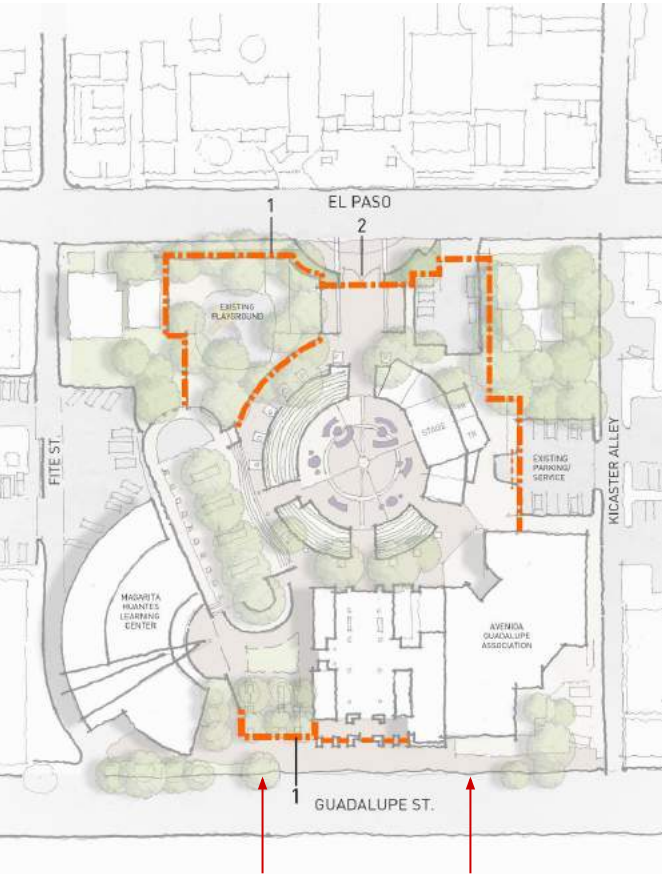
FENCE + GATE CONCEPTS

NEIGHBORHOOD - EL PASO ST.
soft welcoming look



FENCE + GATE CONCEPTS

URBAN - GUADALUPE ST.
creating transparency



SHADE + FURNITURE

OUTDOOR SPACE *placemaking*



SHADE + FURNITURE

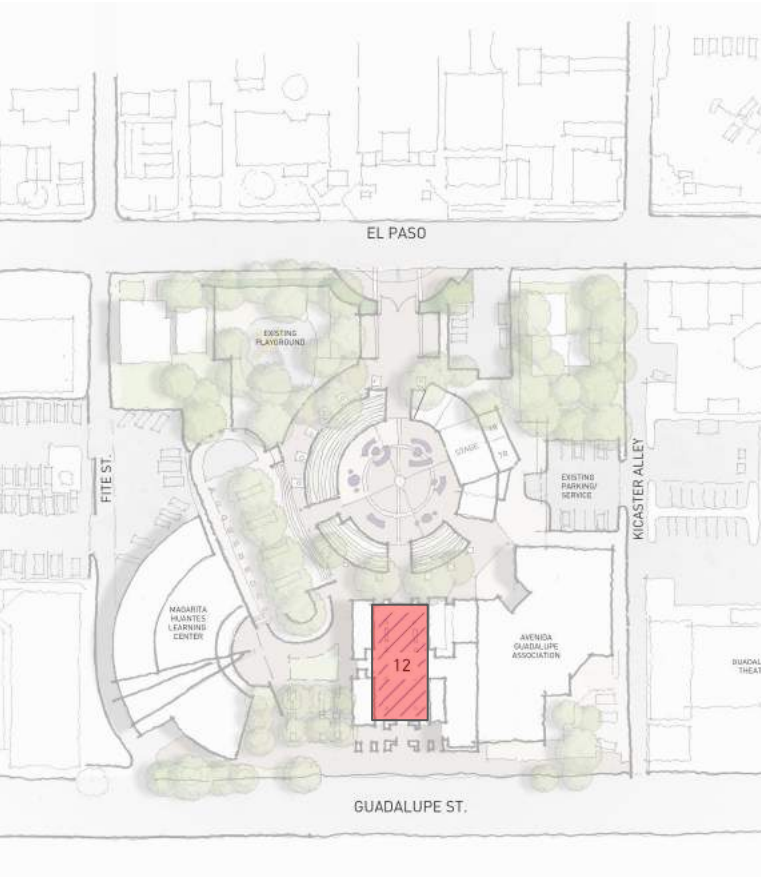
OUTDOOR SPACE *placemaking*



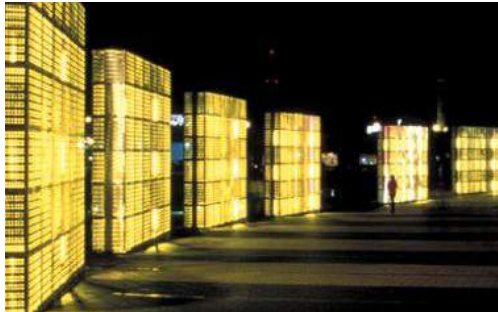
COMMUNITY HUB + PLAYGROUND TOILET



GREAT HALL

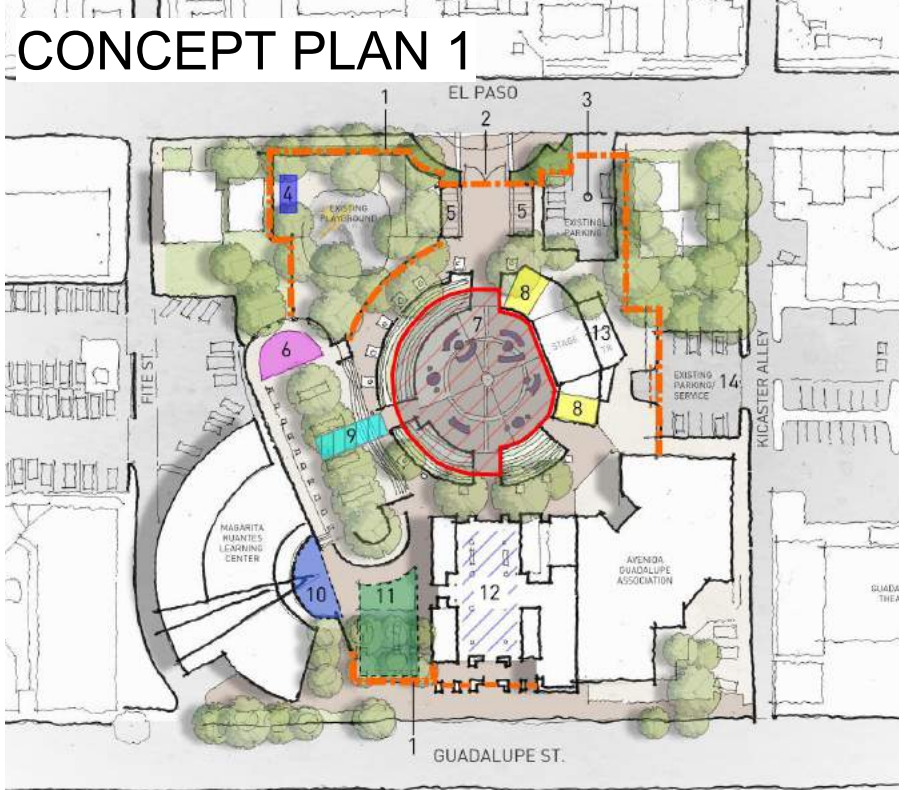


LIGHTING

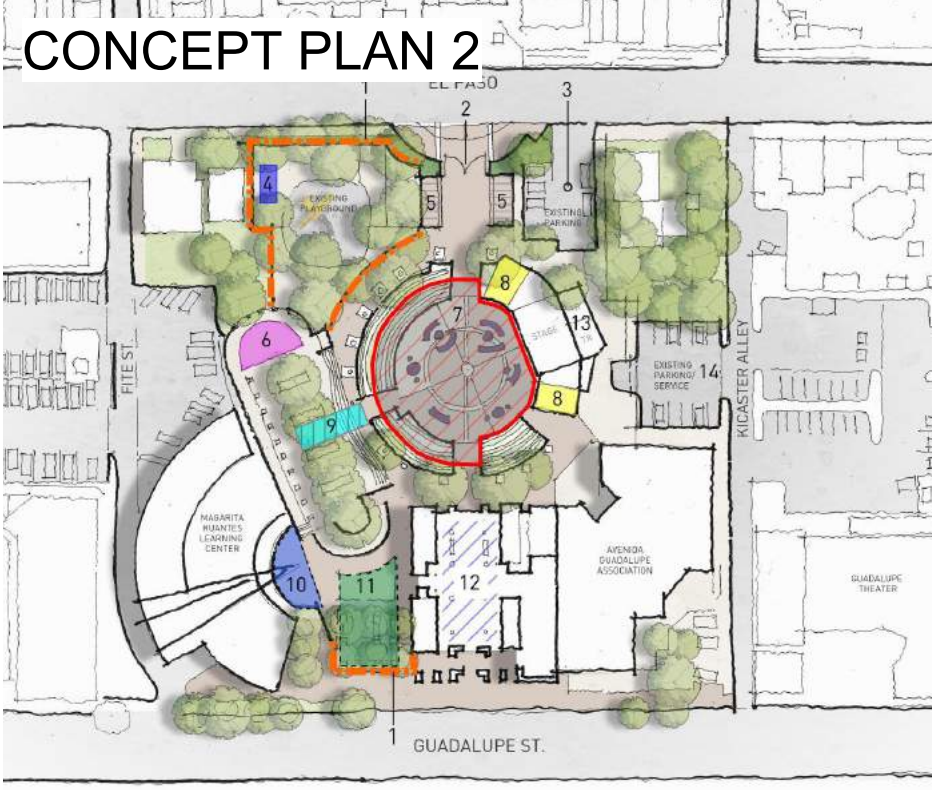


PLAZA GUADALUPE

CONCEPT PLAN 1



CONCEPT PLAN 2



thank you
gracias

